



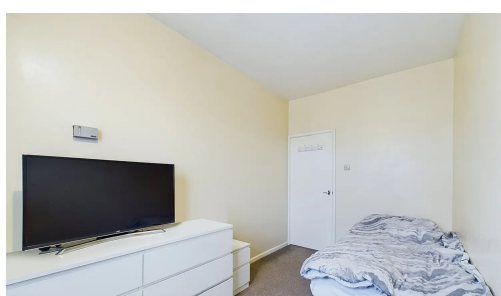
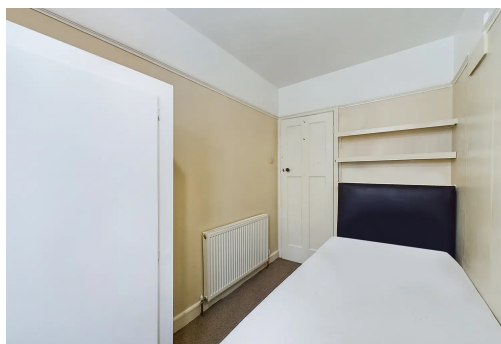
Bush Grove, Stanmore

Spacious 5-bed semi-detached house in Stanmore, with 1 bedroom and WC downstairs, gas heating, modern kitchen with utility area, garage with driveway for 2 cars, private rear garden. Close to Canons Park Tube, shops, and schools. Perfect family home with comfort and convenience.

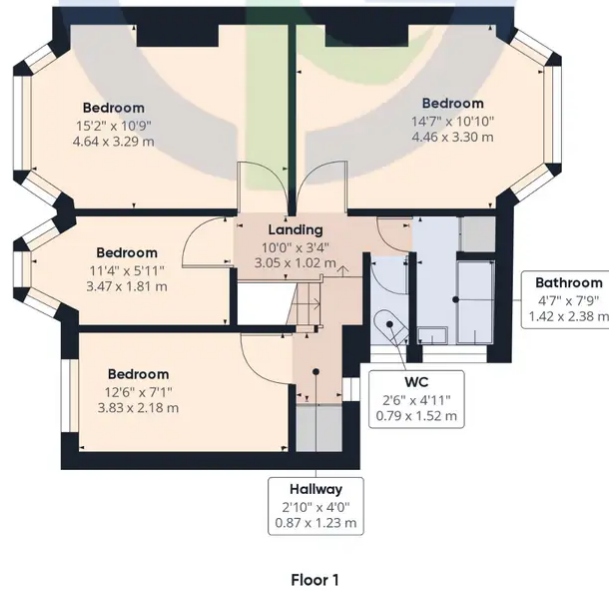
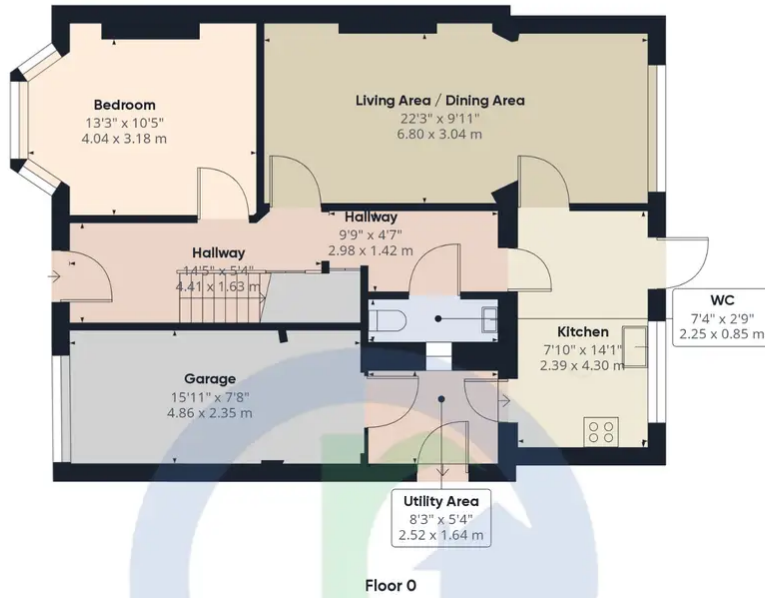
Oyster Properties present this spacious 5 Bedroom semi-detached house situated in a highly sought-after residential road in Stanmore. The ground floor features a comfortable bedroom, a water closet for additional convenience, ample living space that seamlessly connects with the dining area, separate modern kitchen equipped with a stove and utility area complete the floor offering. Upstairs, the first floor unfolds into 4 spacious bedrooms including master bedroom with fitted wardrobes and also features a bathroom equipped with a bathtub and a separate water closet. Furthermore, property offers a garage with own driveway for 2 cars and includes a private rear garden. This property signifies lavish living with a blend of comfort and convenience, making it a perfect family home. It is located within a short walk from Canons Park Tube Station, shopping facilities, and well-regarded schools like Whitchurch Primary and Park High School.



- 5 Bed Semi-Detached House
- Living Room with Dining Space
- Modern Kitchen and Utility Area
- Two WC and One Bathroom
- Gas Heating
- Private Rear Garden
- Garage and Driveway For 2 Cars
- Close to Canons Park Tube Station
- Walking Distance to Whitchurch Primary and Park High School
- Council Tax Band : F







Approximate Total Area

1372 ft²

127.46 m²

For illustration Purpose only, not to scale