



Ivere Drive, New Barnet

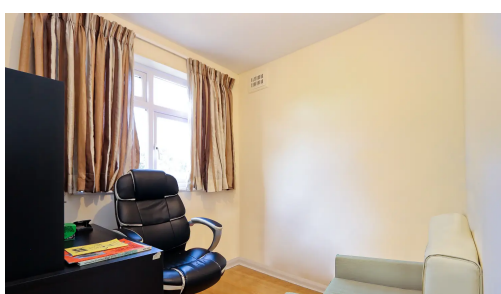
£700,000 Freehold

Spacious 3-bed semi-detached house in sought-after Whetstone and Barnet area. Through lounge, separate kitchen/dining, guest cloakroom. Private garden, garage, driveway for 2 cars. Close to shops, restaurants, parks, good schools, and transport links.

Oyster Properties is proud to present this spacious 3 bedroom semi-detached home in very sought after area on the borders of Whetstone and Barnet. The property comprises spacious through lounge, separate kitchen, dining area and guest cloakroom on the ground floor. On the first floor we have 3 spacious bedrooms, storage and family bathroom. Further benefits from its own private garden, garage and own driveway for at least 2 cars. It is close to good local amenities including, a cinema, shops restaurants, parks and schools such as St Catherine's RC School and The Totteridge Academy. High Barnet Tube and New Barnet Stations are nearby.



- Chain Free
- Semi Detached
- 3 Good Sized Bedrooms
- Guest Cloakroom
- Garage and Private Garden and Patio
- Off Street Parking for 2 cars
- Close to St. Catherine's RC School and Ark Pioneer Academy
- Close to High Barnet Tube and New Barnet Stations
- Council Tax Band: E



Floor Plan

Address:
Ivere Drive
New Barnet
EN5 1AS



Total Area: 108.7 m² ... 1170 ft²

All measurements are approximate and for display purposes only

For illustration purposes only, not to scale

