



88 Hillside Gardens, Edgware

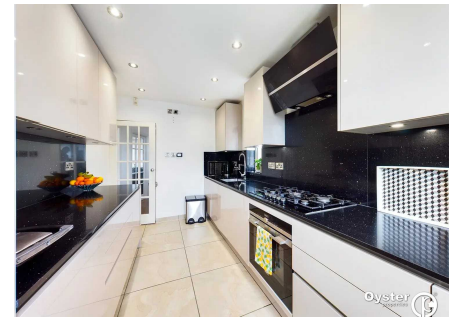
£750,000 Freehold

Separate Fitted Kitchen • Spacious Through Lounge • Three Double Bedrooms • 2 Bathrooms and W/C • Garage Turned Into Gym • Scope for Extensions (STPP) • Rear Garden with Side Access and Patio • 10 Minutes' Walk to Stonegrove and Edgwarebury Park

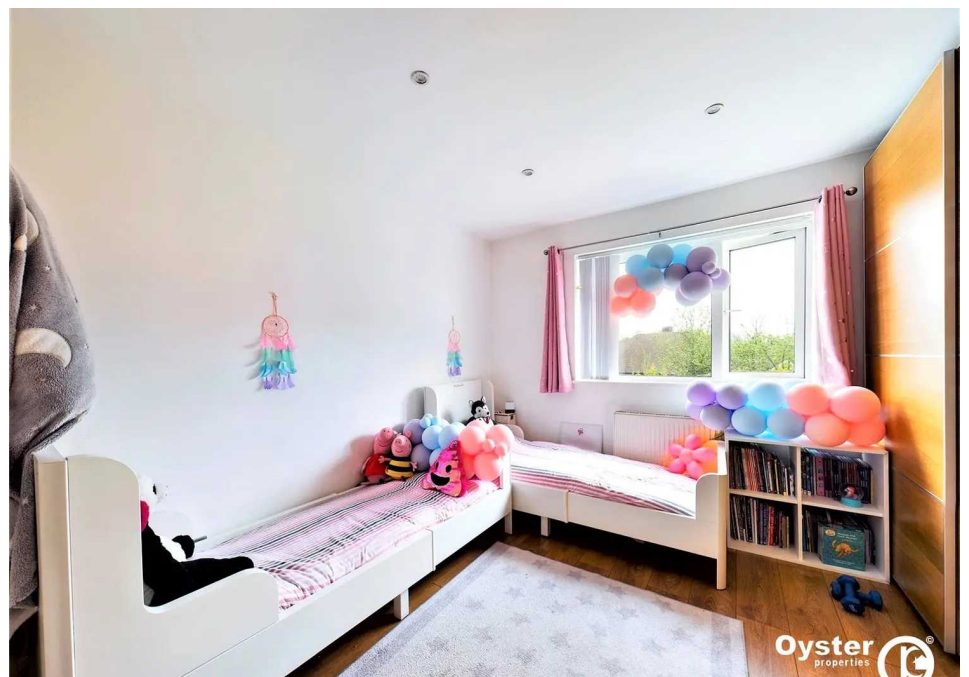
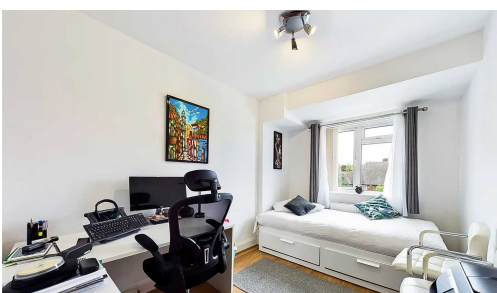
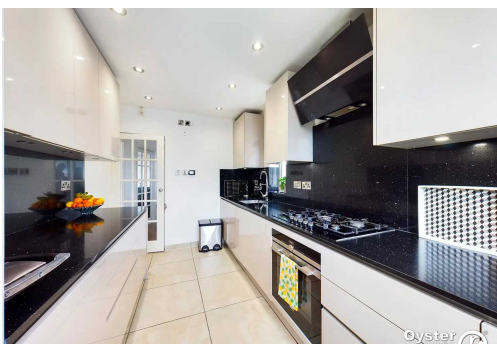
Oyster properties proudly present this well maintained 3-bedroom semi-detached family home situated in highly sought-after residential road within eas...

Council Tax band: E

Tenure: Freehold

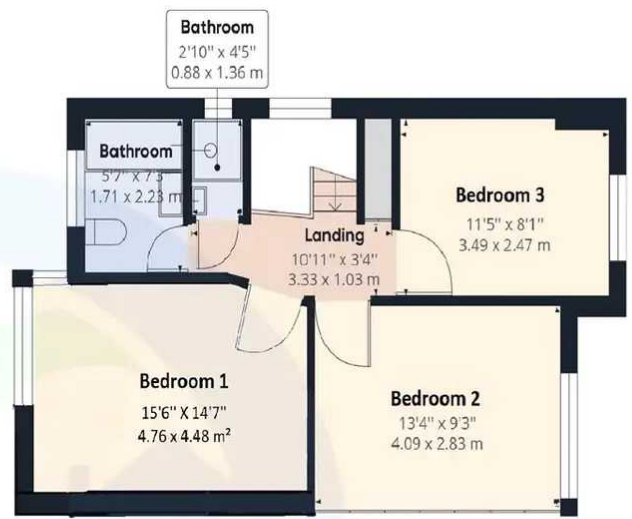


- Separate Fitted Kitchen
- Spacious Through Lounge
- Three Double Bedrooms
- 2 Bathrooms and W/C
- Garage Turned Into Gym
- Scope for Extensions (STPP)
- Rear Garden with Side Access and Patio
- 10 Minutes' Walk to Stonegrove and Edgwarebury Park





Ground Floor



First Floor



Approximate Total Area
1140.97 ft²
106 m²

